

Holidays 2009

www.nybmwcca.org

DIE ZUGSPITZE

NEW YORK CHAPTER NEWSLETTER



The Grapes
Of BMW

Serious drivers know that braking is just as important as acceleration. And for those 3 Series drivers who demand the best, BMW Performance braking components can unleash a whole new level of excitement.

Our BMW Performance cross drilled brake rotors feature reduced weight and offer superior handling even under wet conditions. The result: Enhanced safety and performance no matter where you're headed.

BMW Performance

bmwbayside.com



The Ultimate Driving Machine®

These. Brakes. Have. Amazing. Stopping. Power.



BMW of Bayside

217-07 Northern Blvd.
Bayside NY 11363
718-229-3636
bmwbayside.com

New York is the pinnacle of cosmopolitan cities. BMW of Bayside is representative of that too. Our Parts Professional speak English, Spanish, Italian, German and Chinese.

We are here Monday through Friday 8AM-5PM and on Saturdays 8AM-3PM
BMW CCA NY Chapter Members will receive a 15% discount on parts.
A valid Club ID must be shown at time of purchase.



3 2010 Chapter Board

4 President's Page
André Noël

4 New York Chapter Board
Holiday Message

5 Annual Holiday Party
& President's Dinner

6 Gears Garage: Shortness of Shift
Nik Veler

8 Crystalline Tint
Matt Zakarian

10 FEATURE: The Grapes of BMW
Third Annual NY Chapter BMW CCA
Wine & Shine at Pindar Vineyards
Steve Geraci

14 MINI E
The Electric Car is Here...to Stay
Garageboy

NEW YORK CHAPTER EVENTS CALENDAR

2009

December

5th Annual President's Dinner and Holiday Party

2010

February

20th Annual Beach Party at Euromeccanica

April

3rd New York International Auto Show

16th New York Chapter Driving School at Pocono Raceway

June

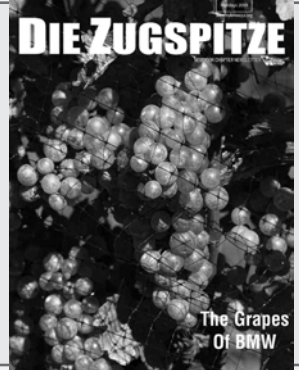
14th-15th New York / Patroon Chapters Driving School
at Watkins Glen Raceway

August

23rd - 29th O'Fest at Road America

On The Cover: Grapes
from the beautiful Pindar
Vineyards, the host of our
sunny Wine & Shine event in
September.

Photo by Jerry Goldstein



Announcing the 2010 New York Chapter Board of the BMW Car Club of America

André Noël, President
Mike Allen, Vice President
RoseAnn Burke, Treasurer
James Siegel, Secretary

The Board of the New York Chapter is seeking members to help drive the Board and steer the direction of our Chapter in 2010. You can start by joining us at our monthly dinner Board Meeting the second Wednesday of every month.



compukarma

steven j. bernstein

917.584.4317

steven@compukarma.com

- > harmony
device integration
connectivity
- > enlightenment
database
personal training
- > peace
networks & servers
preventative care
- > tranquility
security
backup & recovery
- > serenity
wireless



PRESIDENT'S PAGE

André Noël

Check, check, check. I think I have it all. I'm just going through my checklist of things to bring to Oktoberfest this year. When you drive a 20-year-old E30 M3, spare parts is a must. You cannot find spare parts for this car at your local auto parts store. It's all about being prepared for the long drive to Georgia.

My question to everybody here: is your Bimmer ready to go on a long drive on the spur of the moment? All I usually need to do is check the oil and coolant levels and I'm ready to go. Today's new cars are very reliable and with all the self-checking systems built into them, all you should need to do is fill up the tank and go. But you still need to check your gauges every once and a while.

Make sure to keep a extra quart or two of oil in the car. Finding the latest grades of oil for your car nowadays is not all that easy when you are between major towns on the highway. A few other things to keep in the trunk are a set of gloves, a safety vest and disposable coveralls. This is what I carry in all my vehicles: One quart of oil [I go for 2 myself .ed.], three sets of gloves (cotton, leather, latex), yellow safety vest, disposable coveralls, flashlight and, ducktape. Along with the tool kit built into your BMW you can fix most minor problems that may arise.

Well it is time to hit the road... on to Lake Lanier in Georgia to be at Oktoberfest for the annual BMW gathering. Over 700 enthusiasts are expected to attend. I attend every year and every year I say: if you have never attended O'Fest, you owe it to yourself to go once while you are a member.

The New York Chapter's Annual President's Dinner and Holiday Party is Saturday, December 5, 2009 at the luxurious Seawane Country Club. Please join me for check the website for more details. HAPPY HOLIDAYS to all and have a safe winter.

Regards,
André Noël

Season's Greetings from the 2010 New York Chapter Board



Board, from Left to Right, Sherwin DeShong, Steve Geraci, Jim Siegel, RoseAnn Burke, Tony Howell, Icela Fischthal, GJ Dixon, Mike Allen, André Noël, and Steve Bernstein (missing: Matt Brod, Nik Veler, Mike Bizzarro) Photo by anonymous waiter who spilled hot oil on a Board Member's back

Die Zugspitze is published by and for the members of the BMW CCA New York Chapter Inc. ("The Club"). All of its contents shall remain the property of the club. The Club assumes no liability for any information contained herein, or provided by its member/volunteer consultants. None of said information bears the status of factory approval unless so indicated. Modifications within the warranty period may void your warranty. The club is not connected in any manner with BMW AG, or BMW NA. Unless otherwise stated, maintenance and modification procedures herein are not "Factory Approved" and their use may void your BMW warranty. Ideas and opinions are those of the writers, and no authentication or approval is implied by its editors or publishers, who assume no liability for information contained herein.

NY Chapter Officers

President

André Noël 917-885-3107
noelsm3@nyc.rr.com

Vice President

Mike Allen
jbmike@aol.com

Treasurer

RoseAnn Burke 917-561-8051
msnybmw@aol.com

Secretary

James Siegel 917-841-2841
jim@nj.rr.com

Member-at-Large

GJ Dixon
bmwclubracer@aol.com

Die Zugspitze Editor

Steven Bernstein 917-584-4317
nybmwcca@garageboy.com
Sam Wong
amuroray1@gmail.com

Webmaster

Michael Bizzarro 631-368-1280
ewc@pouch.com

Advertising

James Siegel 917-841-2841
jim@nj.rr.com
Sherwin DeShong 917-576-2453
srde28@hotmail.com

Event Chairs

Drivers School Registrar

Mike Allen: jbmike@aol.com

Drivers School Chair

Anthony Howell: unclbimmer@hotmail.com

Chief Track Instructor

Chet Marfatia 917- 539-7672
cmarfatia@gmail.com

Street Survival Chair

Matt Brod: onrails3@hotmail.com

Membership Chair

Steve Geraci: stevegeraci@reflexphoto.com

Social Events Director

Icela Fischthal: icela@optonline.net

Greater New York Auto Show

Sherwin DeShong: srde28@hotmail.com

Autocross Chair

André Noël: noelsm3@nyc.rr.com

AAA Driver Improvement Program

Anthony Howell: unclbimmer@hotmail.com
Sherwin DeShong: srde28@hotmail.com

Beach Party, BBQ

Anthony Howell: unclbimmer@hotmail.com

Vineyard Series Chair

Steve Geraci: stevegeraci@reflexphoto.com

Technical Advisor

Mike Shiffer - Euro Meccanica
Office 914-668-1300

Safety Advisor

Victor Gagliano - VAS
Office 516-908-2180

NY BMW CCA CHAPTER

Annual Holiday Party

& President's Dinner



Date: Saturday, December 5th 2009

Cocktails: 7PM / Dinner: 8PM

Please RSVP no later than November 23rd, 2009 with check, name and age of children attending. Cash or money order only accepted at the door. Seating is limited.

Icela Fischthal 914 Hewlett Drive, North Woodmere, N.Y. 11581 / icela@optonline.net

Price: Adults \$70/person / \$20/child, under 7 free (by deadline)

Santa will be giving gifts to the children!

(Children must be registered in ADVANCE to assure that Santa will bring them a gift.)

Please visit the NY BMW CCA website for the exquisite menu

Location: Seawane Country Club

Club Drive

Hewlett Harbor, Long Island NY 11557 (516) 374-1110

Directions

FROM WESTCHESTER AND CONNECTICUT
Whitstone or Throgs Neck Bridge onto Cross Island Parkway Southbound. Proceed to Southern State Parkway Eastbound to Exit 13. South on Central Avenue. Central Avenue changes to Mill Road after crossing Sunrise Highway Proceed to end of Mill Road , and then make left on West Broadway. Left on Broadway for 2 traffic lights. Then make right on East Rockaway Road. Proceed 7/10 mile and make right turn on Schenck Lane. Right turn on Club Drive directly to Seawane.

FROM NORTH SHORE, LONG ISLAND
Cross Island Parkway Southbound then follow above directions.

FROM MANHATTAN
Queens Midtown Tunnel or 59th Street Bridge to LIE Eastbound. Proceed to Van Wyck Expressway Southbound to Belt Parkway East. Exit at Sunrise Highway and proceed East past Green Acres Shopping Center to Mill Road. Right turn on Mill Road then follow Westchester directions above.

Sponsorship by Bay Diagnostics, VAS Enterprises, Allstate Insurance, EuroMeccanica, compuKarma, Detailing Dynamics, Sofia Restaurant, and Steven Fischthal DDS

_____ Adults @ \$70.00 per person

_____ Children @ \$20.00 per person

Children _____ Number of boys

_____ Number of girls

List names, addresses, emails & phone numbers of all persons attending

Make checks payable to:
BMW CCA NY Chapter
Mail to:

Icela Fischthal, 914 Hewlett Dr.
No. Woodmere, NY 11581



Gears Garage: Shortness of Shift

By Nik Veler, NY BMW CCA Member

Hello and welcome to the fall season in the great northeast! Today I would like to share with you some insights about short shifters. So to the short of it, don't do it if you are not going to do it correctly. For the most part, it will mean big \$\$\$ for the best parts money can buy. Also, you will pay dearly for the person or shop to do it. Only consider taking tips from those who have done it and have put significant mileage on their cars since their kit was installed. At the very least make sure a competent shop checks it when you are done.

install it so you do not suffer as some with this issue have. Drive hard, and get home safe and sound. Happy Holidays from the GEARS HEAD! ❖

“ At the very least make sure a competent shop checks it when you are done. ”



Photo by Nik Veler

A proper BMW factory shift kit with stainless shifter knob

As we all know by now in life, anything too short is never very good! Be careful not to select an extremely short shifter. A short throw is dangerous for your transmission and some of the parts surrounding it. A very good example of this is in the new 135's and 128's. For the most part the first run of these and some other BMW's today have or had plastic mounting points for the linkage. In fact, there is now an updated BMW Performance Short Shift Kit for the 135i (P/N: 25 11 0 444 657). Boy, I feel so much better about my car being made of old cola bottles. The extra leverage required will break some of them and this will not be covered under your warranty since you've modified your car. Be very careful since, if this happens, it will be near but not totally impossible to drive it – and do not drive it – you most likely will be towed to the nearest dealership! There exist updated parts that could be had since BMW knows they messed up on this one. Order the updated kit and

Taverna
Sofia
The Taste Of Greece In Astoria

Taverna Sofia
34-21 34th Ave. at 35th St.
Astoria N.Y. 11106
Open 11am to 11pm

Tel. 1(718) 626 0303
E-mail TavernaSofia@yahoo.com



AUTO STORAGE and TRANSPORTATION

FACILITY

Spacious climate controlled facility to store your most valuable automobiles, boats, motorcycles and trailers.

TRANSPORT SERVICE

Individual enclosed automotive and motorcycle transport by skilled professional drivers.

STORAGE PRICING

Available in blocks of 3, 6, 9 and 12 months.

One month storage is available depending on space availability and can be added on to block of 3, 6, 9 or 12 months.

TIME	AUTOMOBILES	MOTORCYCLES
3 Months	\$ 600	\$ 350
6 Months	\$1,100	\$ 675
9 Months	\$1,500	\$ 975
12 Months	\$2,100	\$1,200

Call for quote on trailers, boats and other oversize items.
Additional charge will apply for oversize trucks and SUV's.

- Vehicles will be started on a bi-weekly basis to avoid battery failure.
- Car cover rentals are available upon request.
- Pick-up and delivery is available for \$50 plus \$1.25 per mile. A 15% discount will apply for 6 month or more customers.
- 24 hour notice is required for access to vehicle and access will be limited or not available on specific holidays.

TRANSPORTATION PRICING

Enclosed, door to door transportation is available by trained professional drivers. Rates will depend on distance.

OTHER SERVICES

- Interior and Exterior Hand Wash
- Interior/Exterior Detailing

CONTACT INFORMATION

Located in Northern New Jersey on the New York State border.

Call: 914-772-7737
celticspeed@gmail.com



Crystalline Tint

by **Matt Zakarian, Detailing Dynamics**

When we look back at our respective industries, we find that few radical advances have taken place. In the auto detailing and enhancements industry, I can only point to paint clay as one of these transformative innovations. Recently, I was informed by a sales representative that 3M was releasing a new breed of window tint for both homes and automobiles which was based on the latest “nano” technology. My business partner, Eddie and I weren’t particularly enthusiastic about the news since we were already installing a high end carbon tint. We’d heard the “nano” buzzword before, and it is both misused and hyped. The representative asked for the opportunity to demonstrate the difference. He told us to give him samples of the tint we were using as well as other tints we had for testing. After 30 seconds of comparison, we looked at each other and proclaimed “wow”. Since then, we’ve shown that demo to countless clients and have heard a resounding “wow” every time. The name of the film that gets this reaction is “Crystalline Tint” by 3M.

The Minnesota Mining and Manufacturing Company – 3M – became the inventor of window film in 1966 by receiving the very first patent on the window film process. Back then, the film was dyed. These films work on the principle of absorption – the darker the film, the better it worked. At best they approached 30% heat reduction but had the drawback of poor visibility at night. These simplistically dyed films are still used today because of their low cost, but they are not very durable over time or in sunny climates. Eventually, they turn a lovely shade of purple with extensive exposure to the sun.

A second generation of window film emerged in the early 1990s. This film was constructed of metal integrated with dye. This hybrid film contained dye to absorb heat and metallic particles to reflect heat from the sun’s rays. This technology approached 50% heat reduction. The major drawback with metalized films is interference with electronic components in the car. If you consider the number of electronic devices in your vehicle, metalized films can become more than just a nuisance. Even though hybrid metalized films are sold as “high end”, this is a misnomer.

The latest generation of window film has been made possible through recent developments in “nano” technology – no longer merely window tint, but rather “Energy Management Films”. This new breed of film is manufactured with ceramic/crystalline oxides which are used to specifically block the infrared part of the solar spectrum (i.e. heat). This proprietary film gives the consumers the performance, safety and health benefits of metalized window films without its drawbacks. 3M developed this unique automotive window film in their leading technology laboratories and called it “Crystalline”.

“To empirically test the effectiveness of the Crystalline film, we used two Porsches... The Crystalline car was over 25° F cooler even though it was tinted with a lighter film.”

Picture 200 layers of polymers stacked together to form a film the thickness of a Post-It Note. This is the same advanced technology used to improve the brightness of flat panel LCD televisions. Since Crystalline uses no metal in its construction, the problem of interference with electronic devices in cars was eliminated.

Crystalline is certified by the Skin Cancer Foundation since it blocks 99.9% of the UV radiation and has a total SPF (Sun Protection Factor) that exceeds 1700. To fully understand what makes the latest generation of nano-films so special, let’s examine the source of what we’re trying to filter out – the sun’s rays. Sunlight basically consists of three parts: ultraviolet rays (UV), heat rays or infrared (IR), and visible light rays (VLR). All other forms of radiation are either filtered by our atmosphere (or what’s left of it) or man-made. Of all the rays we are exposed to from our sun, the UV rays, which are about 3% of the sunlight, are the ones which are harmful and responsible for unwanted health conditions. The IR, which is about 56% of the sunlight, is what produces heat.

The VLR, which is about 41% of sunlight, is the part of the sun we see. The “nano” films are designed precisely for the part of sunlight which we wish to reduce – the heat-producing IR rays. The challenge was to design a window film which blocks IR rays, much like the previous generations, while remaining nearly colorless for excellent night visibility as well as compliant with local laws.



Photo courtesy of Matt Zakarian

The 20% carbon film Porsche



Photo courtesy of Matt Zakarian

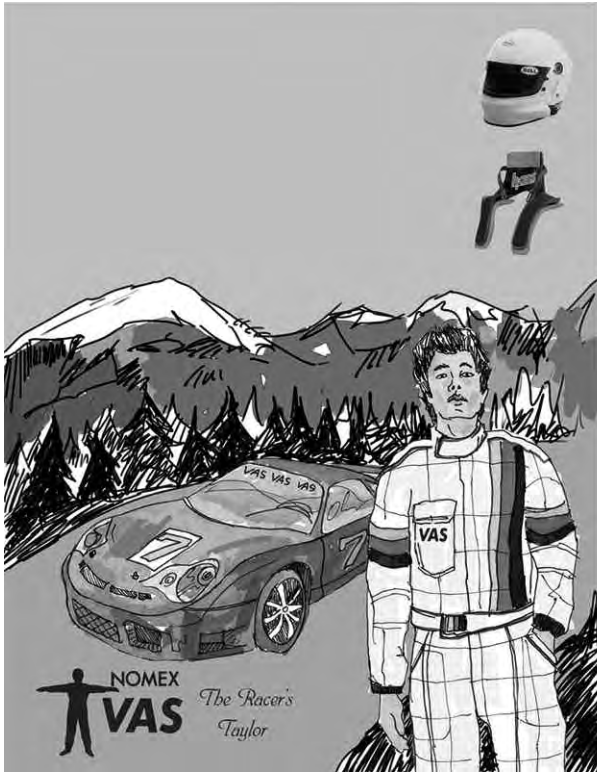
The 40%/70% Crystalline film Porsche

To empirically test the effectiveness of the Crystalline film, we used two Porsches. The first was a black 997 S tinted at the dealership with 20% carbon film and the second was a black 997 GT2 which Detailing Dynamics tinted with 40% Crystalline on the side and rear windows, and 70% Crystalline on the windshield. The cars were parked next to each other on a sunny July day. After a few hours, we took temperature readings inside the cars with a digital pyrometer. The Crystalline car was over 25° F cooler even though it was tinted with a lighter film.

Although we had a choice of manufacturers of nano-films to do business with, in the end we chose 3M for a number of reasons:

1. 3M, an American company, has been providing

— continued on p14



Victor Gagliano of Vas Enterprises, supplier to the Auto Racing Community for over 25 years, has moved into his new location at TKX Performance at

130 Railroad Street,
Huntington Station, NY 11746

Victor, together with Taso and Richard, of TKX Performance, will take care of all of your performance needs, for the track and street. Vas is fully stocked with Helmets, Hans Devices, Nomex Suits, racing shoes, gloves and much more.

Come visit or call at

516-908-2180 (office)

516-775-1060 (mobile)

www.vasracingsuits.com



Suspension ^{E36/E46} Rebuild Kits



← E36 →

STAGE 1



STAGE 2



← E46 →



CS Tuning is not affiliated with any automobile manufacturers. Manufacturer names and/or part numbers are used only for identification purposes.

sales@ecstuning.com
www.ecstuning.com
1.800.924.5172

ECS TUNING™

The Grapes of BMW

**Third Annual NY Chapter BMW CCA
Wine & Shine at Pindar Vineyards
September 20, 2009** By Steve Geraci

This year's Third Annual New York Chapter BMW CCA Wine & Shine on Long Island's beautiful North Fork at Pindar Winery on Sunday, September 20th was the best ever...too bad I wasn't there to witness it. Due to the fortunate circumstance of attending my brother-in-law's wedding, I placed the event into the capable hands of my son, Andrew Geraci and his fiancée, Christine Freidrich. As I expected, they did an outstanding job of overseeing the day's events.

The weather could not have been better. A mostly pre-registered group of over 40 BMW owners, including their families and friends made the drive out to the eastern north fork of Long Island on one of the best autumn days of September. Our hosts, Pindar Vineyards, along with tasting room manager JoAnn Orlando, made everyone feel welcome. From free wine tasting in their Tasting Room Bar, to discounts on wine purchases and use of their Pavilion overlooking the vineyards, to music provided by Tommy Sullivan, original member of *Johnny Maestro & the Brooklyn Bridge*, everyone enjoyed a memorable day.

Along with the Wine, which included samples of Pindar's award-winning vintages, courtesy of the NY Chapter, was the Shine – our Peoples' Choice Clean Car Show. Winners in a variety of classes received their choice of select Pindar wines. One of the entrants, winning in two classes was Tom Loreto, with a magnificent M6 from 1988. This M6 has won in other concours events on Long Island. Tom and his wife, Elena made the short trip from Sag Harbor and enjoyed meeting other BMW enthusiasts from Eastern Long Island. Agustin Alonso traveled all the way from the Upper West Side of Manhattan to win Best In Show in his beautiful convertible 650i.

On behalf of the entire Chapter, I'd like to thank Andrew and Christine for running the event as well as Jerry Goldstein for his photography. Next September we'll meet again at another of the North Fork's great wineries! ♦



Photo by Jerry Goldstein

A winter wine and a merlot, exquisite examples of Pindar's line-up

“Winners in a variety of classes received their choice of select Pindar wines.”



Photo courtesy of John Sinon

The beautiful 1989 325i of John Sinon

Peoples' Choice Clean Car Show winners:

Best In Show
Best M Car
Best One Series
Best Three Series
Best Five Series
Best Six Series
Best Eight Series
Best 20+ Year Old
Best Z Car

Agustin Alonso
Tom Loreto
Anton Vazanellis
John Sinon
Rich Shiu
Tom Loreto
Rick Davis
John Sinon
Marty Halper

2006 650iC
1988 M6
2009 135i
1989 325iC
2010 550i
1988 M6
1995 840Ci
1989 325iC
2009 Z4



Agustin Alonso,
Best in Show



Tom Loreto,
Best M Car, Best Six Series



John Sinon,
Best Three Series, Best 20+ Year Old



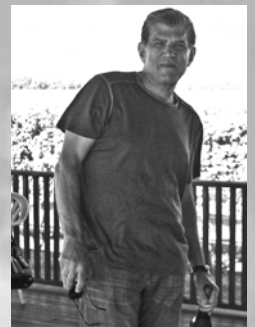
Anton Vazanellis,
Best One Series



Rich Shiu,
Best Five Series



Rick Davis,
Best Eight Series



Marty Halper,
Best Z Car



Photo Courtesy of John Simon

Good friends, nice cars, good wine, beautiful sunshine...



Photo by Jerry Goldstein

Rare 8 series amongst the entrants



Photo by Jerry Goldstein

Greetings from Pindar from all the New York Chapter members!



Photo by Jerry Goldstein

The People's Choice judging begins...

Rudtner's
European Auto Inc.

Specializing in: The Complete Repair and Servicing of
BMW & PORSCHE

- **Hunter 4 Wheel Alignment**
- **Routine Service or Repair**
- **Computerized Diagnostics**
- **Engine Rebuilding**
- **Transmission Rebuilding**
- **Performance Upgrades**
- **Mounting & Balancing**
- **Track Support available**
- **DE Track Prep**
- **1500 HP Chassis Dyno**

We are a complete service facility as well as a NYS inspection station. We carry a full compliment of Computer Diagnostic equipment. From simple oil changes to total ground up restorations there is one choice. We are professionals, in business over 20 years. Come in and visit us in our new location at 16 Saint Johns Place. Freeport .

Bring in the coupon and receive a 10% discount on any service or repair. Not applicable to NYS inspections.

Call us for Unichip installation and Dyno Tuning.

We guarantee better performance



With our more than 20 years in business, coupled with our factory trained BMW Techs, why would you take your BMW any place else?

16 Saint Johns Place, Freeport, NY
516-378-8769 • Fax: 516-378-9663

Monday - Friday 7:30 am - 6:00 pm
Saturday call for an appointment

Exit M9W off Meadowbrook Pkwy.
3 lights on Merrick Road then left onto
Saint Johns Place.
We are the 1st building on the right. #16
Stop in and visit us or give us a call.

BMW-PORSCHE-AUDI-VOLKSWAGEN-VOLVO-SAAB



Crystalline Tint

— continued from p8

innovative marketplace solutions since 1902. It is a \$25+ billion/year company which invests more in research and development annually than many of its competitors achieve in gross annual sales.

2. Window film is only as good as the adhesive system behind it. 3M is the sole window film manufacturer that produces its own adhesive system developed specifically for window tint.

3. 3M places the UV inhibitors in the adhesive coating. No other film manufacturer has this ability. As a result, the 3M adhesive coating is protected against the damaging effects of the sun's UV radiation.

4. 3M abrasion resistant technology allows them to apply a much more durable hard coat than their competitors.

5. 3M uses state-of-the-art testing facilities to assure film quality. Prolonged testing assures long-term durability, color stability, adhesive performance, resistance to metallic corrosion and maintenance of performance characteristics.

Unfortunately, like in any competitive industry, there are some salespeople who sell half-truths rather than facts and make their profession look shady (no pun intended). The truth is that all window tint films block at least 96% of UV radiation; that was the original purpose of the development of window film. So if you go to your local tint shop

and ask them for a film which gives you UV protection, they may let you choose the darkness level, install the a cheap dyed film and take your money. However, you get very little heat reduction.

If the car owner wants only the dark aesthetics of the window film with no concern for comfort, health benefits, visibility or legality, there are plenty of inexpensive tint films available for them. But for those of us who want the abovementioned benefits without the drawbacks, 3M's Crystalline is the logical choice.

The last point to consider regards warranties: this has always been considered somewhat of a joke in the tinting industry. There still exists a large number of installers working out of the back of some dirty garage or used car lot, offering a lifetime warranty on a \$150 tint job. With Crystalline, the car owner receives a real lifetime warranty backed by one of the most respected companies in the world. The warranty not only covers the material, but also protects the buyer by covering the labor for as long as they own their car.

I hope that you now have a better understanding of window films and can make an informed decision the next time you have your car tinted. If you have any questions or comments, please feel free to contact me at Detailing Dynamics. ❖

Buy your parts from BavAuto and save:

- **Free shipping** on most orders over \$150. Exceptions apply to heavy/oversized items and shipments to AK, HI, PR, APOs, etc.
- **No sales tax.** It doesn't matter what state you live in, we're in tax-free New Hampshire.
- **Best price guarantee.** We'll match any advertised price for same-brand, in-stock items. Details are on our web site.



BAVARIAN
autosport

BMW parts, accessories and knowledge since 1974.

www.BavAuto.com • 800.535.2002

Download **FREE** tech & DIY articles
at www.BavAuto.com/newsletter.



QUALITY AUTO CARE, INC.
"Import & Domestic | Diagnostic & Repair"
BMW & Mercedes Specialist | All Work is Guaranteed



STEVE NICOLAOU
TEL: (516) 944-3332
CELL: (516) 526-3869
www.qualityautocare.net

35 DAVIS AVENUE
PORT WASHINGTON, NY 11050





KOS-TOM COLLISION CORP.
Announcing our Newly Released Website
Please visit us at <http://kos-tom.com>

*Come see for yourself the meticulous quality of our work
Then give us a call for your restoration or collision needs*

<p>QUEENS LOCATION: 129-17 91ST AVENUE RICHMOND HILL, NY 11418 (718) 441-7722 PHONE (718) 441-3434 FAX</p>	<p>MANHATTAN LOCATION (FOR PICK-UP AND DELIVERY): 622 WEST 57TH STREET NEW YORK NY 10019 (212) 489-1200 PHONE (212) 489-1311 FAX</p>
--	--

24-HOUR EMERGENCY TOWING: (877)BMW-NYNJ EMAIL: NYBMWCCA@KOS-TOM.COM

DETAILING ■ DYNAMICS

FOR THOSE WHO EXPECT THE BEST!



*Gift Certificates
Available!*

A sanctuary for those who refuse to settle for anything less than perfection.

Offering the finest wax, polishes, compounds and detailing services for the most fastidious customers.

Auto detailing solutions for enthusiasts developed by professional detailers.

- Custom Detailing • Paint Reconditioning
- 3M™ Paint Protection Film
- Engine Detailing • Concours Preparation
- Interior Detailing & Restoration
- Paintless Ding Removal • Window Tinting
- Auto Body Repair • Radar Detectors & Laser Jammers • Metal & Wheel Polishing
- Custom Stereo & Video Upgrades

Pick-Up & Drop-Off Service Available

(516) 747-4114

**66 Windsor Ave., Mineola
MATT ZAKARIAN - PROPRIETOR**

VISIT US
ON THE
WEB

WWW.DETAILINGDYNAMICS.COM

**100%
SATISFACTION
GUARANTEED**



MINI-E: The Electric Car is Here...to Stay

By Garageboy

Depending on whom you ask, the electric vehicle is finally here, and it is here to stay. BMW is right at the front of the line with the new all-electric MINI E. This groundbreaking vehicle, with a 100+ mile range, under ideal driving conditions, is being leased to a lucky 450 customers in the United States, half located in the Los Angeles area, and the other half in the New York metropolitan region. All of these vehicles are being leased for a 12-month field test, and owners underwent a rigorous vetting process to qualify as participants.

“All of these vehicles are being leased for a 12-month field test, and owners underwent a rigorous vetting process to qualify as participants.”

On August 24th, 2009, dignitaries and members of the press gathered on a warm summer afternoon to enjoy the pungent aroma of Department of Sanitation Queens West 5 Lot in Maspeth to bear witness to the delivery of 10 MINI E vehicles from MINI USA to the City of New York.



The 220V 32A fast-charging station, with a proprietary connector, fully charges the vehicle in 3-4 hours

Photo by Garageboy

EuroMeccanica Inc.

114 Pearl Street | Mount Vernon, NY | 914.668.1300
Hours: 8:30-6:00 MONDAY-FRIDAY www.euromeccanicany.com



Services on modern cars include:

- Maintenance and service on most European cars, especially
 - BMW • Mercedes • Audi • Jaguar (pre-Ford)
 - Land Rover • Rolls Royce
- Mechanical and electrical repairs on most European cars
- Electrical and electronic diagnosis on Mercedes, BMW, Audi,
- Land Rover and others
- Brakes, shock absorbers and mufflers on any car

Services on older cars include:

- Reviving cars that have been in storage
- Engine rebuilding
- Component rebuilding, such as manual transmissions, steering gear
- Maintenance and repair
- Partial and complete restorations, overseeing work which is not done in-house, such as painting, upholstery and rechromin

EuroMeccanica, Inc. was started by Michael Shiffer in 1991. Michael is a tech advisor for NYBMWCCA and EuroMeccanica hosts their annual Beach Party, where dozens of BMW owners and enthusiasts converge to learn more about their cars. The shop's atmosphere is warm and open. Questions and input from our customers are welcome, and we make every effort to explain what we are doing to your car, and why.



Race car preparation:

- Installation of roll bars, harnesses, racing seats, fire systems and other safety devices
- Suspension modification, such as coil-over conversions, larger sway bars and urethane bushings
- Chassis stiffening and reinforcement Bolt-on engine modifications, such as cams, cold-air boxes, exhaust systems and larger radiators
- Fuel cell installation
- Two-way radio installation

Eight of these vehicles were designated to be used by the city's Street Conditions Observation Unit (SCOUT), a quality-of-life program to identify potholes and graffiti throughout the five boroughs, while the other two were allocated to the New York City Department of Parks and Recreation.

A press conference was held at the sanitation lot to introduce a new breed of energy-efficient vehicles into the city's fleet. Mayor Michael

Bloomberg was joined on the podium by Jim O'Donnell, President of BMW NA, Sanitation Commissioner John J. Doherty, and Mayor's Office of Operations Director Jeffrey Kay who discussed the need to reduce the emissions of the city's fleet vehicles by 30% over the next 8 years. In addition to the MINI E, new hybrid sanitation trucks were introduced as well. Nevertheless, the MINI E was the star of the day, with members of the press getting test drives in the vehicle to enhance their knowledge of this increasingly popular car. ❖



A member of the Mayor's staff prepares the MINI E for test drives by the press

Photo by Garageboy

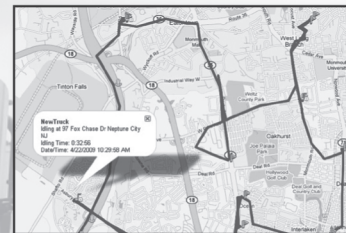
EDITOR'S NOTE: The MINI E is the first step in BMW's "Project i", the company's long-term commitment to research and develop a new type of vehicle, specifically to meet the needs of the world's fastest growing megacities. BMW is very serious about this effort, and the MINI E is a pioneering test of this technology. It is projected that vehicle growth over the next 20 years will expand dramatically in these cities, and BMW is committed to provide an environmentally sound and performance-oriented solution in this market. In our next issue, we will be featuring the MINI E, explaining the motivation behind this project, describing the technology used in it, and interviewing some of the pioneer owners that are a new generation of car owners that drive future development of electric and alternative-fuel vehicles.

T²·track

OFFERING AFFORDABLE GPS FLEET TRACKING \$9.95 per month per vehicle

**limited time offer for the first three months*

- ✓ Eliminate unnecessary fuel/labor expenses and usage
- ✓ Improve and Automate Routing- Quickly dispatch closest vehicle to customer or destination
- ✓ Use iTrac to get Advanced Theft Deterrence and Recovery
- ✓ Receive Emails/Texts to your phone when problems arise



- ✓ Use iTrac for Easy Web-based viewing for Real-Time Fleet Location
- ✓ Record and replay a vehicle's journey
- ✓ Detect & Alert on Excessive Idling, Speeding, or Improper Use

www.2-track.com

Please contact us for a free demo mention BMW-CCA

888.676.4437



THERE'S NO SUBSTITUTE FOR A NEW CAR OTHER THAN A NEW CAR.



Mark Jones
1109 HALLOCK AVENUE
PT JEFF STATION
a062152@allstate.com

Call or stop by for a free quote

Call me today to learn about New Car Replacement. If your new car is totaled, you'll get a new one - not just book value.

(631) 928-8222



Allstate
You're in good hands.

Feature is optional and subject to terms and conditions. Available in select states now and in most states by 1/31/06 (subject to regulatory approval where required). Allstate Property and Casualty Insurance Company: Northbrook, IL. ©2005 Allstate Insurance Company



Bay Diagnostic European Service Specialist

(718) 615-0705



The dealer alternative for your BMW
*You don't have to go back to the dealer to get
Professional Maintenance and Repairs.*

We are fully equipped with dealer level Equipment, Information and Original Factory Parts. This enables us to provide the same quality repairs and service you get at the dealer with the convenience of dealing with a local repair shop.
Why wait 2 weeks for an appointment !

We have extended hours for drop off and pickup. We also provide a special pickup and delivery service.

1717 Gravesend Neck Road Brooklyn, N.Y. 11229
Visit our website at: www.baydiagnostic.com



The Ultimate BMW Dealership for Sales, Service and Parts...

Rallye BMW

rallyebmw.com



The Ultimate
Driving Machine

ALL NEW YORK CHAPTER BMW CLUB MEMBERS INVITED



2009 BMW M3

***RALLYE**BMW*

#1 Brush Hollow Road, Westbury NY • 516.393.0000 • rallyebmw.com



BMW Certified
Collision Repair
Centers

www.hasselbmw.com



The Ultimate
Driving Machine®

We can't undo the accident.
But we can undo the damage.

Elevate your collision repair. BMW Certified Collision Repair Centers are staffed with elite technicians who can fix anything on your BMW from minor dents to severe damage. These experts go through strenuous training to meet BMW's lofty standards and will quickly and professionally restore your vehicle to like-new condition.

Hassel BMW Collision Center

153 East Merrick Rd
Freeport, NY 11520
(516) 378-0010
www.hasselbmw.com

©2008 BMW of North America, LLC. The BMW name, model names and logo are registered trademarks.



BMW CCA New York Chapter
PO Box 920576
Arverne NY 11692

PRESORTED
FIRST CLASS
US POSTAGE
PAID
FARMINGDALE
NEW YORK
PERMIT NO. 334